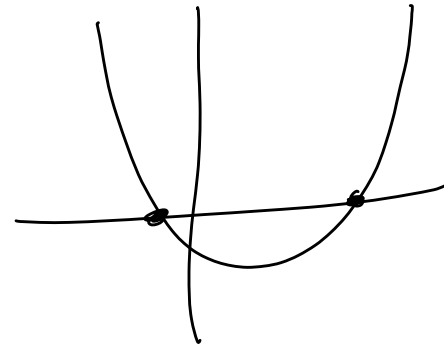
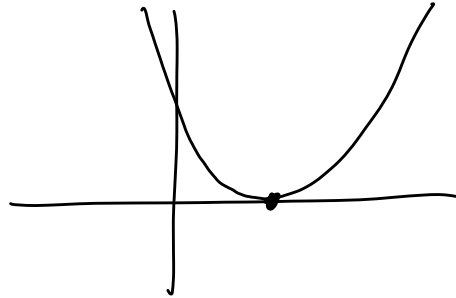
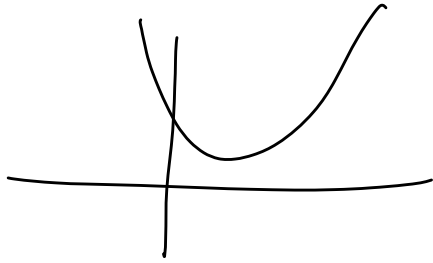


# 8.4 - Studying Quadratic Solutions

Note Title

The discriminant:



$$x = \frac{-b \pm \sqrt{b^2 - 4ac}}{2a}$$

Value of Discriminant	Result

① How many & what type of solutions are there?

a)  $x^2 - 2x + 4 = 0$

b)  $4x^2 - 12x + 9 = 0$

c)  $6x^2 + 5x - 4 = 0$

② Find the equations for which the given numbers are solutions.

a)  $4, \frac{2}{3}$

b)  $-5$  (Quadratic still)

c)  $3\sqrt{2}$

$$d) 5 - 2i, 5 + 2i$$

$$e) \frac{5}{4} - \frac{\sqrt{33}}{4}, \frac{5}{4} + \frac{\sqrt{33}}{4}$$