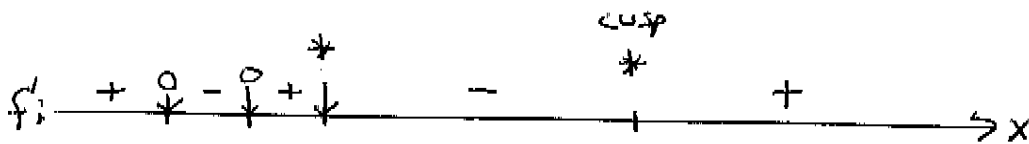
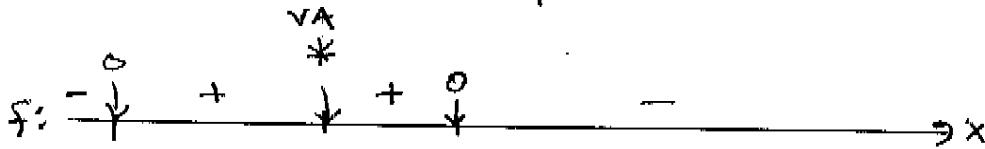
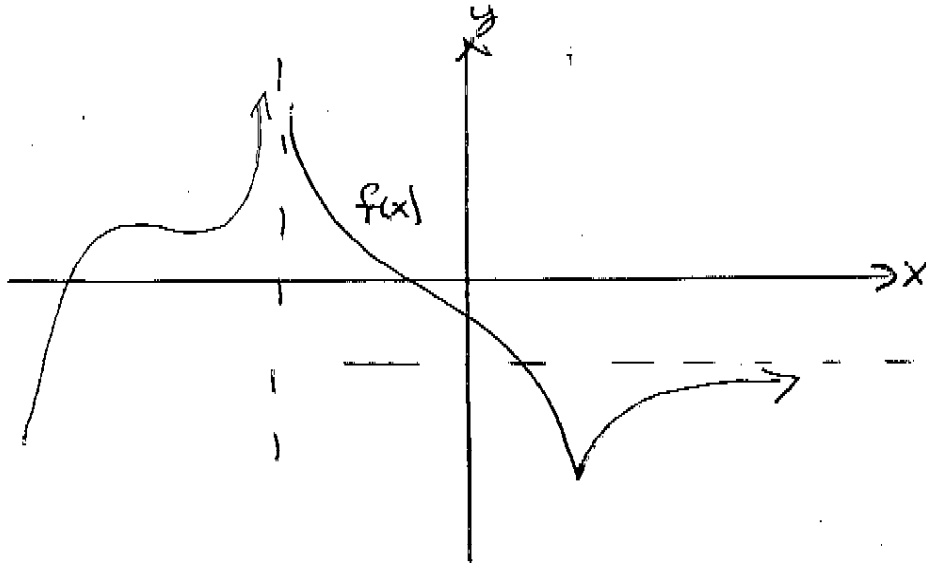


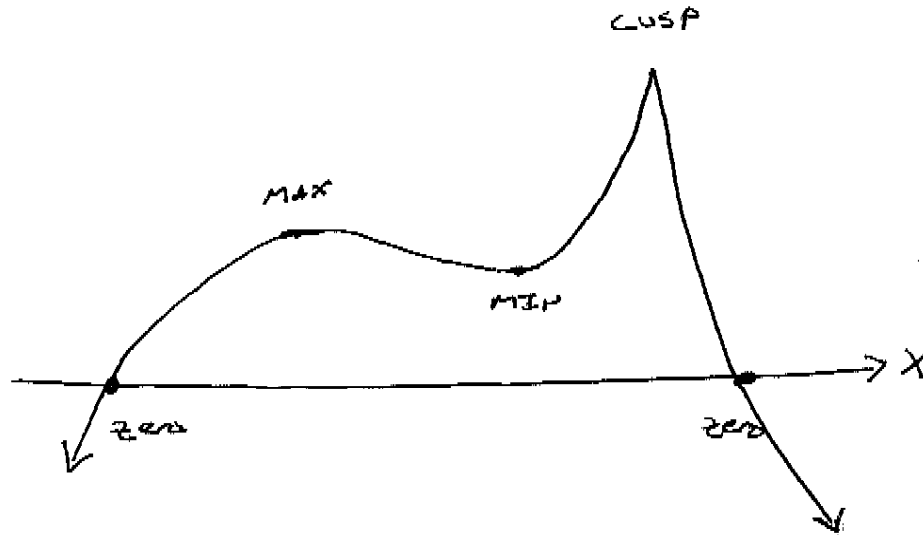
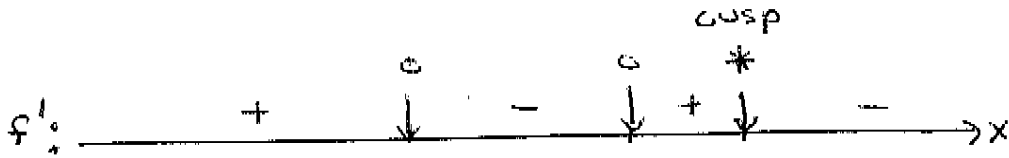
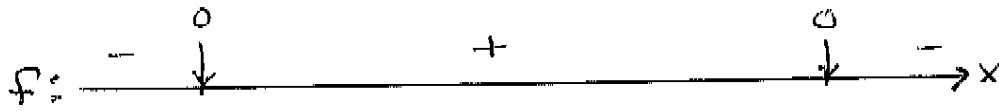
NAME: KEY

Part 4: Take Home Assignment

Problem 1: Use the given graph of f to construct sign diagrams of f and f' .
 Maintain a consistent scale.



Problem 3: Use the sign diagrams of f and f' to sketch a possible graph of f .



Problem 4: Use the sign diagrams of f , f' , and f'' to sketch a possible graph of f .

