

Math 115

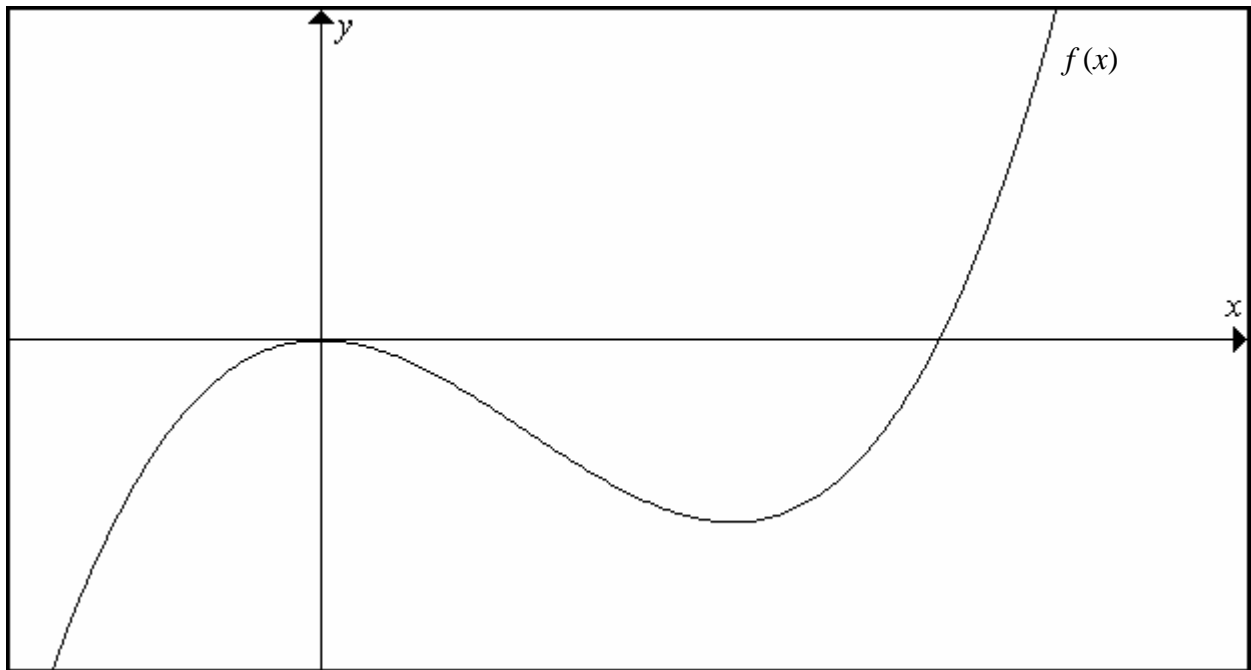
Dusty Wilson

Constructing Sign Diagrams given a graph.

1.) Given the graph of $f(x)$, complete the sign diagrams of $f(x)$.

To do this, keep the same scale on your sign diagrams as is on the graph above. That is, $x = 0$ on the sign diagrams should be directly below $x = 0$ on the graph.

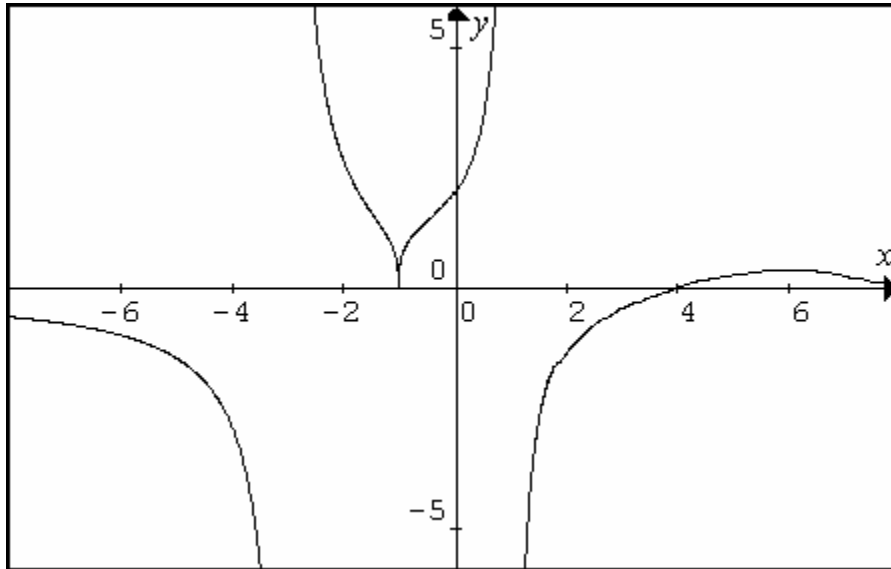
Be sure to label each value/region on the sign diagrams with the appropriate interpretation.



$f(x)$ _____ \rightarrow

2) Given the graph of $f(x)$, complete the sign diagrams of $f(x)$. Also note any vertical and/or horizontal asymptotes.

Be sure to label each value/region on the sign diagrams with the appropriate interpretation.



Where are the Asymptotes?

Vertical . . .

Horizontal . . .

$f(x)$ _____ →

Can you do the reverse of this process?

That is, can you sketch a graph given the sign diagrams?